


SIXTH FORM SUMMER TRANSITION TASK

	<u>PSYCHOLOGY</u>	
	Qualification Level	A-Level
	Exam Board/ Syllabus	AQA
	Contact(s)	Miss Luddington and Mrs Smith

Psychology is the science of behaviour and experience.

An 'approach' is a general view of what causes behaviour. Some psychologists think that the way we behave is inherited, others believe that it is largely learned through life experience.

Task:

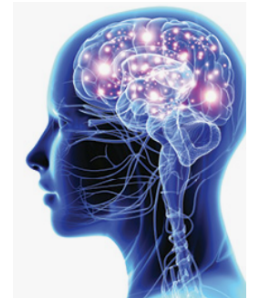
In the Psychology induction session, we explored the key approaches to explaining behaviour - **Biological** approach, **Behaviourist** approach, **Cognitive** approach and **Psychodynamic** approach.

For this task, we would like you to practice using these approaches to explain behaviour. Choose **one** behaviour from the list below and explain the potential cause of that behaviour from the point of view of each approach.

1. What causes people to suffer from obsessive compulsive disorder?
2. Why do some people become offenders (engage in criminal behaviour)?
3. Why do people become addicted to smoking or gambling?
4. Why are we attracted to some people and not others?
5. Why do some people cope differently with stress?

It is your choice how you would like to present your work. Some ideas are listed below:

- Poster
- PowerPoint presentation
- Art work
- Comic strip/storyboard
- Essay



CHALLENGE yourself further by...

- Considering the strengths and weaknesses of **one** of the approaches you have used
- Explore other approaches e.g. humanistic approach, evolutionary approach to explain your chosen behaviour

Explore these websites to find out more:

- <https://www.psychologistworld.com/issues/approaches-in-psychology>
- <https://www.simplypsychology.org/perspective.html>
- <https://www.verywellmind.com/perspectives-in-modern-psychology-2795595>

